

SCIENCE

L.I: To recognise that living things can be grouped in a variety of ways



Invertebrates

Animals without a backbone can be divided into **SIX** more groups:

Annelids



Crustaceans



Mollusc



Arachnids



Insects



Myriapods



Annelids



The annelids have a long thin body, divided into segments. They have no eyes or legs. Most annelids are earthworms or flat worms.

By burrowing in soil, earthworms let air in and this supports good bacteria for plants.

Crustacean



A woodlouse body is divided into many segments and is oval-shaped. They have 7 pairs of legs and can roll into a ball to protect themselves. Woodlice break down dead material into its healthy parts, ready for the earth to re-use.

Mollusc



Molluscs have soft bodies with one foot and tentacles with eyes on the ends. Their bodies are slimy and sometimes they have a hard shell for protection. The Romans used to eat snails and sea molluscs include mussels and oysters.

Arachnid



The arachnids include spiders and scorpions. Spiders have a head and body with eight legs. They can create webs to capture prey and have many eyes. Some arachnids have a sting or bite poisonous to humans.

Insects



Insects have 6 legs and sense using antennae on their heads. They have compound eyes with many different parts. Some have wings and some, like ants and bees, live in colonies.

Insects are good for plants as they carry pollen from one plant to another and this creates new seeds and new plants.

Myriapods



Myriapods have at least 15 pairs of legs and a long body that has segments with a hard exoskeleton. Like crustaceans they help break down dead matter into its good parts for plants to eat.

True or False?

How much do you remember?

1. Myriapods have more than 8 legs.
2. Invertebrates have exo-skeletons.
3. " Does it have six legs?" is a good question to classify if an animal is an **insect** or **mollusc**.
4. All insects have wings.

What am I?

Annelid, Myriapod, Arachnid,
Insect, Mollusc, Crustacean?



I am an annelid. I have a long thin body,
divided into segments. I have no eyes or legs.
I can burrow and slither.

What am I?

Annelid, Myriapod, Arachnid,
Insect, Mollusc, Crustacean?



I am an arachnid. I have 2 body parts and eight legs. I can create webs to capture prey and I have many eyes. I can have a poisonous sting or bite.

What am I?

Annelid, Myriapod, Arachnid,
Insect, Mollusc, Crustacean?



I am a mollusc. I have a soft body with one foot and tentacles with eyes on the ends. My body is slimy and sometimes I have a hard shell for protection.

What am I?

Annelid, Myriapod, Arachnid,
Insect, Mollusc, Crustacean?



I am a crustacean. My body is divided into many segments and is oval-shaped. I have 7 pairs of legs and can roll into a ball.

What am I?

Annelid, Myriapod, Arachnid,
Insect, Mollusc, Crustacean?



I am an insect. I have 6 legs and sense using antennae on my head. I have compound eyes with many different parts. Some of us have wings and some of us live in colonies.

What am I?

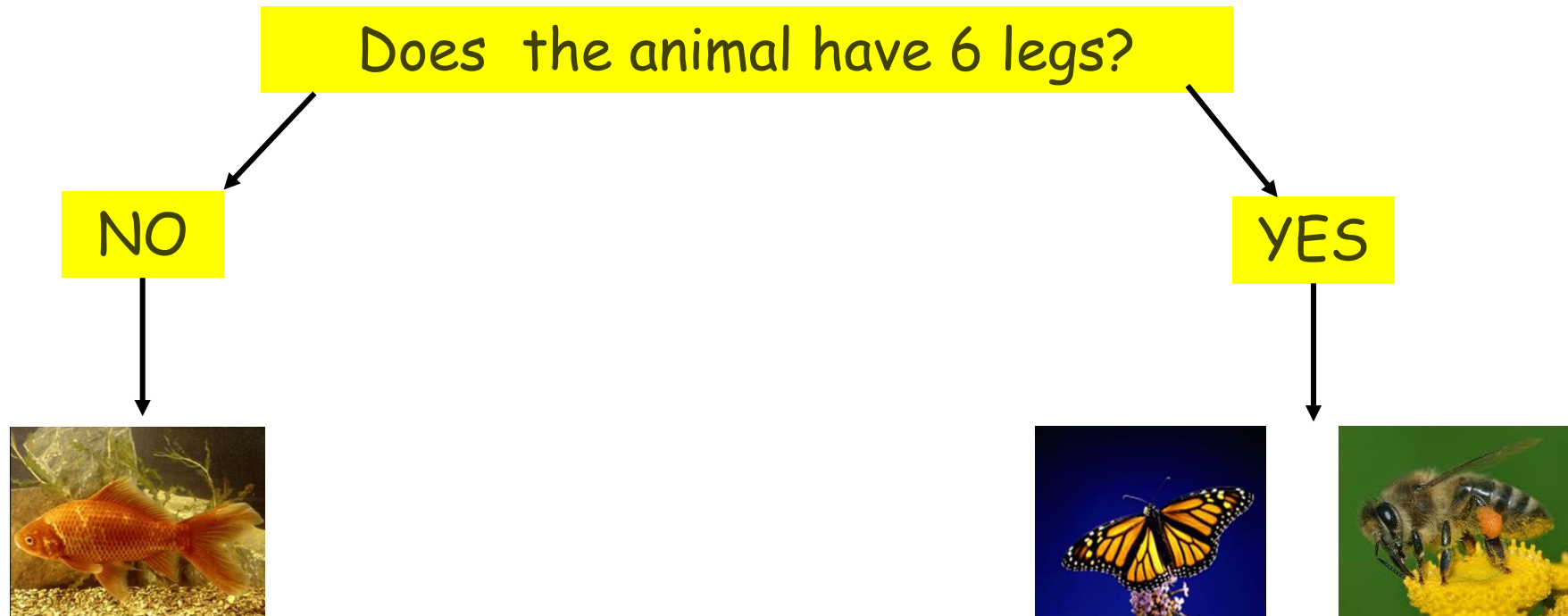
Annelid, Myriapod, Arachnid,
Insect, Mollusc, Crustacean?



I am a myriapod. I have at least 15 pairs of legs and a long body that has segments with a hard exo-skeleton.

CLASSIFICATION KEYS

Scientists group animals by asking **Yes** and **No** questions about them.



What **yes** or **no** question could the scientist ask to decide if the invertebrate is a **butterfly** or a **bee**?

What important features do insects have ?



What might happen if there were no invertebrates on earth?